

Low Voltage Shore Connection – Ship side

General

Port of Bergen’s Low Voltage Shore Connection (LVSC) can deliver both 50 and 60 Hz, and the voltage level is 440V or 690V. A cable drum on quayside provides two cables, each with a length of 30 meter. The power provided from shore is shown in *table 1*

Voltage	S(kVA)	Number of cables	Amp per cable	Total amp
440V	250kVA	1	328	328A
440V	500kVA	2	328	656A
690V	390kVA	1	328	328A
690V	750kVA	2	314	628A

Table 1

The LVSC solution is configured according to NEK IEC/PAS 8005-3. The class authority for each ship needs to refer to this specification.

For further details, see the web page <http://bergenhavn.no/shorepower>

Pricing

The electricity cost for connecting to the LVSC is NOK 1,60/kWh (March, 2015). The costs may be adjusted depending on the market price of supplied energy. Check our webpage for currently cost.

On-Board requirements

The on-board shore connection needs to be according to requirements described in NEK IES/PAS 800-5-3. See *figure 1*

Verification and training

BOH needs a verification of the ships LVSC conformity to IEC/PAS 80005-3.

Companies listed on our web site can carry out the verification and will inform BOH. The presentation of connection procedures can be included as a part of the verification or be held separately.

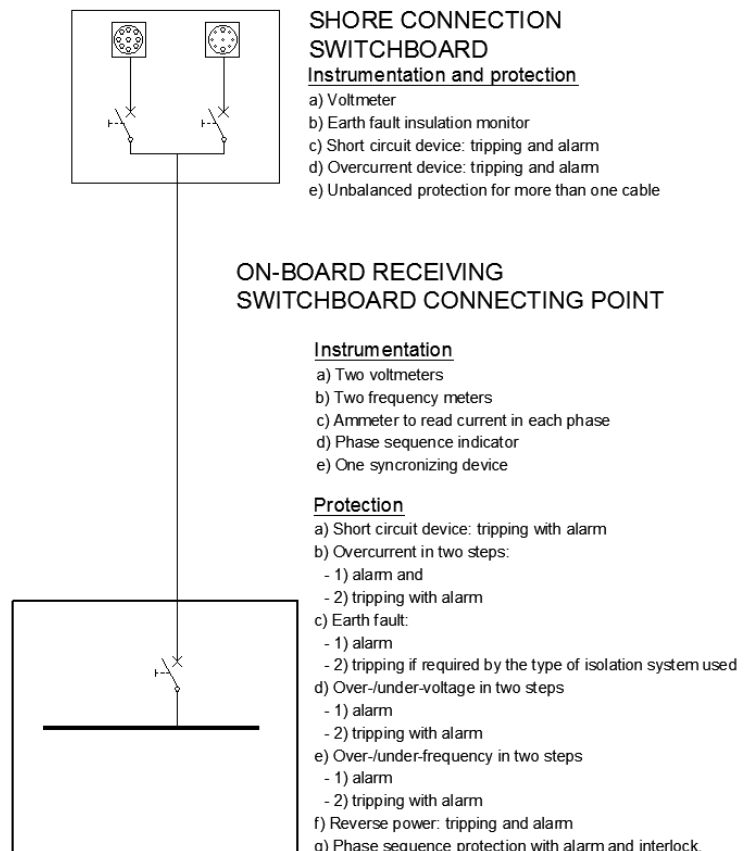
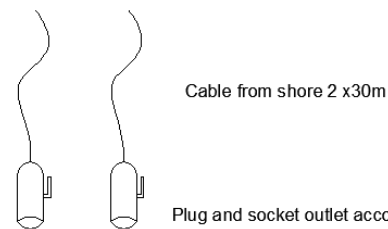


Figure 1